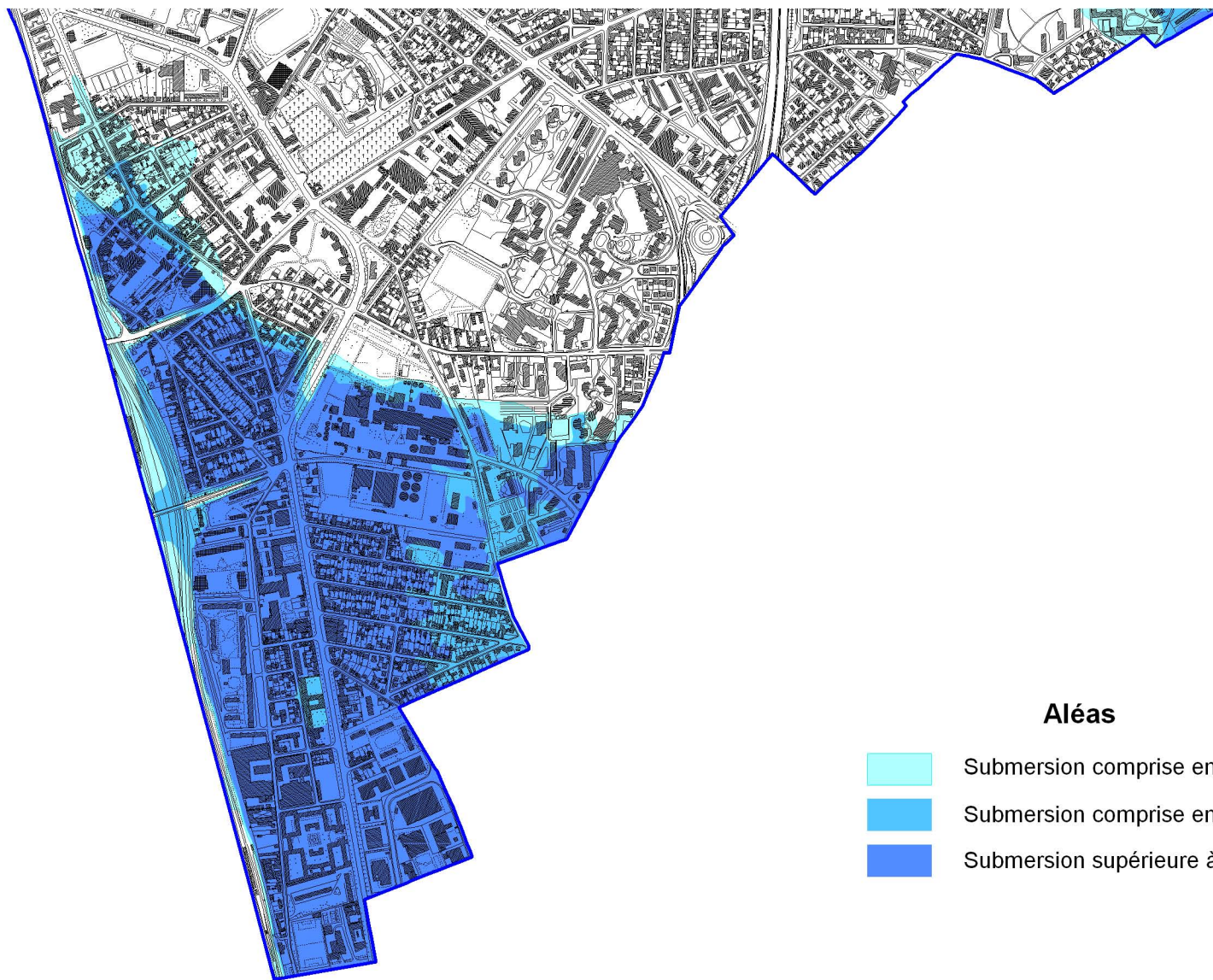



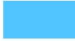

# MAISONS-ALFORT SUD

## Risque Inondation de la Marne et de la Seine

PPRI approuvé le 12 novembre 2007



### Aléas

-  Submersion comprise entre 0 et 1 m
-  Submersion comprise entre 1 et 2 m
-  Submersion supérieure à 2 m

Echelle : 1 / 15 000

Source : fond de plan DDE 94